

## Introduction

BNW Consulting Services Asia is a Consulting-Arm of BUW software (developer of EMX, PDX, EFX and series of Smart-products). Our business philosophy is simple; we are here to assist Pro/ENGINEER users with onsite / remote consulting services and we have gained good ground swell along the years and have received encouraging feedbacks from our customers internationally.

## Consultant Profile

Zim Ng has been in manufacturing industry for more than 10 years. He started off his career as a mould designer and NC programmer for consumer electronic products in Malaysia. Prior to this, he spent more than 6 years in PTC holding several regional technical positions. His key role was supporting strategic customers and liaising with PTC's developers and technical marketing team for future software releases based on customers' feedback.

Consultant  
email address  
Contact

**Zim Ng**  
[zng@bnw-asia.com](mailto:zng@bnw-asia.com)  
+ 6012 4844 920

Experience and Skill  
Prior to PTC

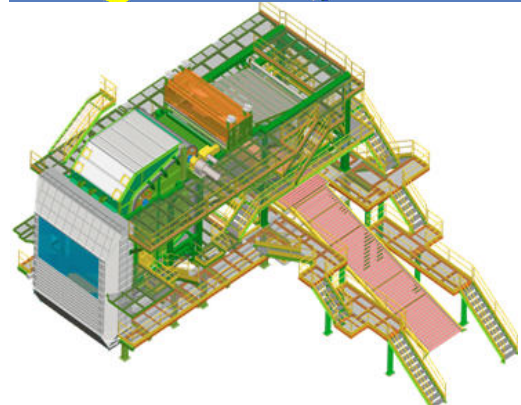
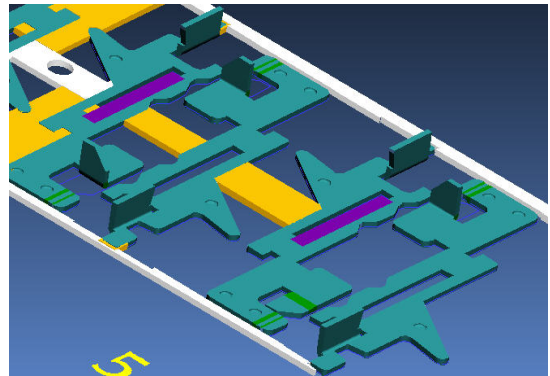
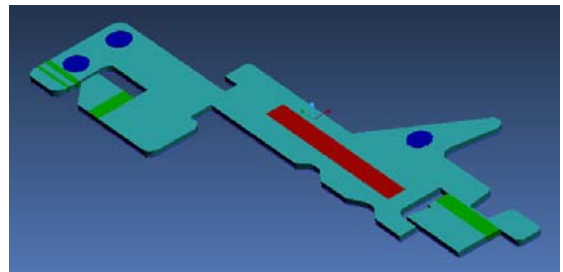
4.5 years as Mold designer and NC programmer

In PTC

Application Engineer (1996-1999)  
Product Specialist (1999-2002)  
New Demo Creation  
EMX Software Development  
REAL LIFE Project implementation  
Competition Benchmarking  
Pro/ENGINEER Customization  
Training for Resellers AE  
Competition Analysis Program

Skill In PTC

- General Pro/E usage
- Solid Modeling
- Surface Modeling
- CDRS Surface Modeling
- IGES Fixing (with IDD)
- Mold Splitting
- 3 Axis Milling
- NC Gpost Customization – 3 Axis
- Vericut Tool path Customization
- EMX Training / Consulting
- EMX Customization
- PDX Training / Consulting
- Created new demo for EMX for 2001 and Wild Fire

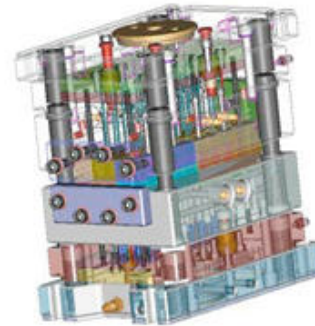


**On Site Training & Consulting Services**

- OnSite Consulting Services

**(Customers List)**

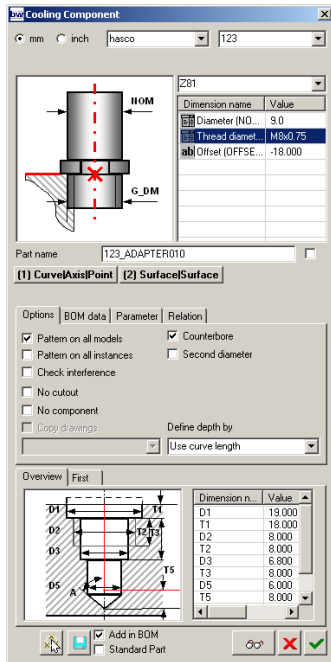
- : Mechwira Technologies **Malaysia**
- : Hitec Mold **Malaysia**
- : ForeMost Center Mould **Malaysia**
- : AMF (AirCRAFT Manufacturing Factory)
- Pakistan**
- : Sony Magnetic **Thailand**
- : Mitec **China**
- : ITT Canon **Singapore**
- : Green Point **Taiwan**
- : Hyundai **Korea**
- : Solitec Mold **Korea**
- : Click Clack **New Zealand**
- : Quality Mold, TN **USA**
- : RD Tool, Kansas City **USA**
- : Lifetime, Utah **USA**
- : NED University **Pakistan**
- : Cooke & Son **South Africa**
- : NYPRO MOLD **Puerto Rico**
- : FCI NT / FCI DG (Pro/E Basic)
- : AL FANAR Mould **Saudi Arabia**
- : MGS Group, Germantown WI **USA**
- : Fox Conn **China**
- : Precision Dies & Tools Co. **UAE**
- : SMi **Saudi Arabia**
- : FCI NT / FCI DG **China** (Adv PDX)
- : ATSi **Thailand**
- : AMG **Egypt**
- : Tyco **US**
- : FCI NT / FCI DG **China** (PDX Customization)
- : Emirate Techno Casting **UAE** (ISDX)
- : INETERGULF **UAE**
- : FoxConn Workshop **China**
- : ISEO **Italy**
- : CRDM **UK**
- : Emirate Techno Casting **UAE** (NC)
- : RPM **New Zealand**
- : Iran Khodro Power Train **IRAN**
- : Morfi KytiaKAKIS **GREECE**
- : Olefinil **GREECE**



**Services Provided:**

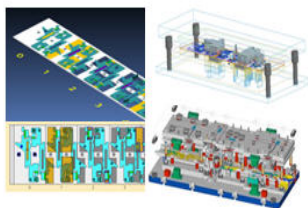
**Pro/ENGINEER Training Services**

**Training Consultation**



- : Pro/Engineer upgrade training (*Pro/Engineer 2001 to Wildfire*)
- : Pro/Engineer upgrade training (*Pro/Engineer 2001 to Wildfire 2.0*)
- : Pro/Engineer upgrade training (*Pro/Engineer 2001 to Wildfire 3.0*)
- : Pro/Engineer upgrade training (*Pro/Engineer 2001 to Wildfire 4.0*)
  
- : Pro/Engineer Wildfire 4.0 Basic introduction
- : Pro/Engineer Wildfire 4.0 Advanced Design
  
- : Pro/ENGINEER Wildfire 4.0 Sheetmetal Design
  
- : Pro/ENGINEER Wildfire 4.0 Detail Drawing
  
- : Pro/ENGINEER Wildfire 4.0 Advance Assembly Design
  
- : Pro/ENGINEER Wildfire 4.0 Advance Surface Modeling (ISDX)
  
- : Pro/ENGINEER Wildfire 4.0 Mold Design (including EMX)
  
- : Pro/ENGINEER Wildfire 4.0 Machining (3 axis milling)
  
- : Pro/ENGINEER Wildfire 4.0 PhotoRendering
  
- : Pro/ENGINEER Wildfire 4.0 Mechanism Design
  
- : Pro/ENGINEER IGES Fixing customized training

**Customization**

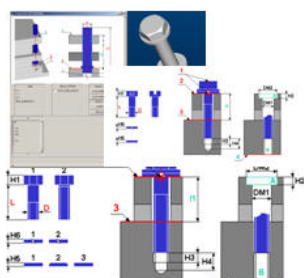


**Pro/ENGINEER Customization Services**

- : EMX Mold Base FULL Customization
- : PDX (Progressive Tool and Die) FULL Customization
- : General Pro/ENGINEER Customization with SmartAssembly
- : EFX (Expert FrameWork) Library Catalog Customization

**Consultation**

**Pro/ENGINEER Consultation Services**



- : Product Design
- : Plastic Mold Design
- : Advance Surface Design (ISDX)
- : 3 Axis Machining (Milling / WireEDM etc)
- : IGES Fixing

**“Our Productivity increased by 35% after deployment of Consulting services by Mr NG, we will certainly ask for his repeat consulting services in future”**

**TH Cheng**  
Tooling Manager  
Mechwira Technologies Sdn Bhd

**“We were very impressed by Mr NG, he has shown us the right methods to implement Pro/ENGINEER software. Once again, I would like to thank Mr NG for his excellent job!!”**

**BL Quak**  
Excutive Director  
Foremost Center Sdn Bhd

**“Ahram Security Group increased productivity by 300% after implementing PDX and of cause, we would like to thank Mr NG for his excellent support...”**

**Ahmed Aref**  
Ahram Security Group, Egypt

